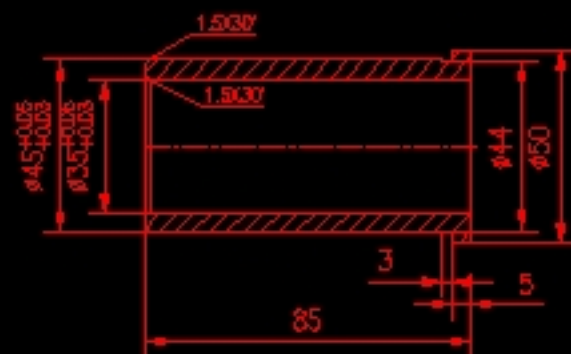
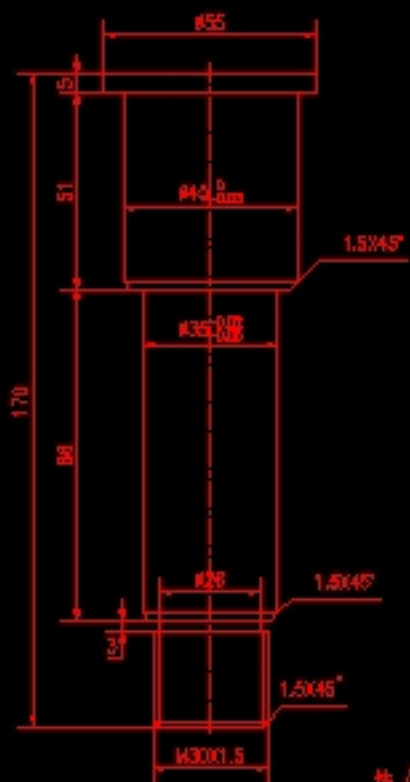


Q235A 4件		天津科技大学
零件名称: 罩上筒体板2		图号:
比例: 1:1		日期: 2007.5
图例:		第 6 页 共 12 页
日期: 2007.5		第 6 页 共 12 页

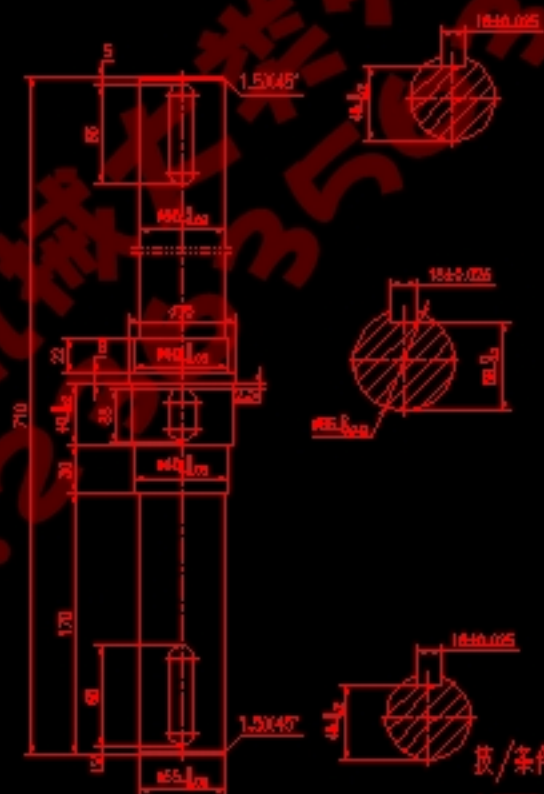


ZQSn6-6-3 6件		天津科技大学
零件名称: 套套		图号:
比例: 1:1		日期: 2007.5
图例:		第 10 页 共 11 页
日期: 2007.5		第 10 页 共 11 页



技/条件  
作图用M30x1.5外六角螺母2件

Q235A 6件		天津科技大学
零件名称: 盖开垫		图号:
比例: 1:1		日期: 2007.5
图例:		第 11 页 共 11 页
日期: 2007.5		第 11 页 共 11 页

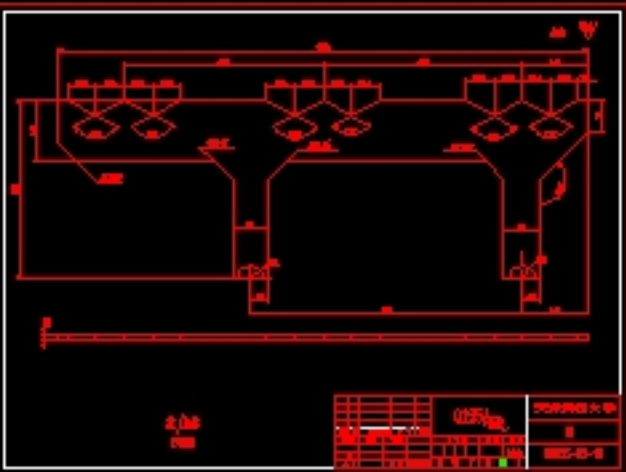
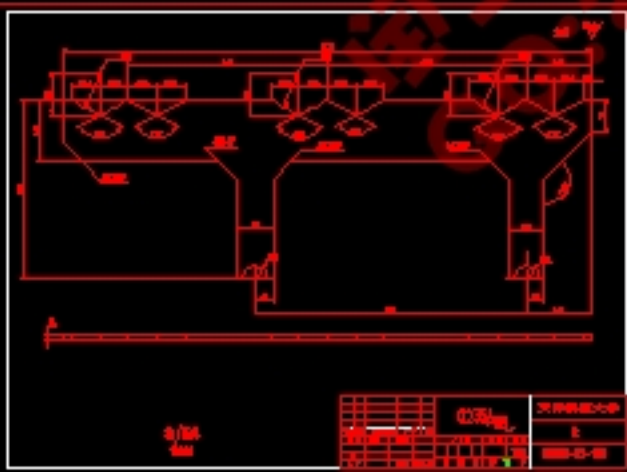
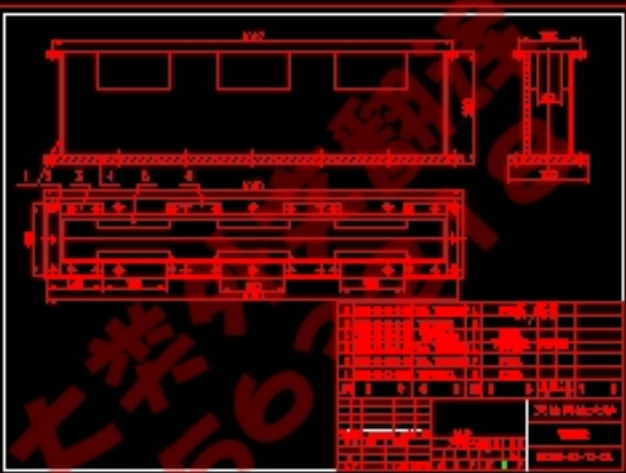
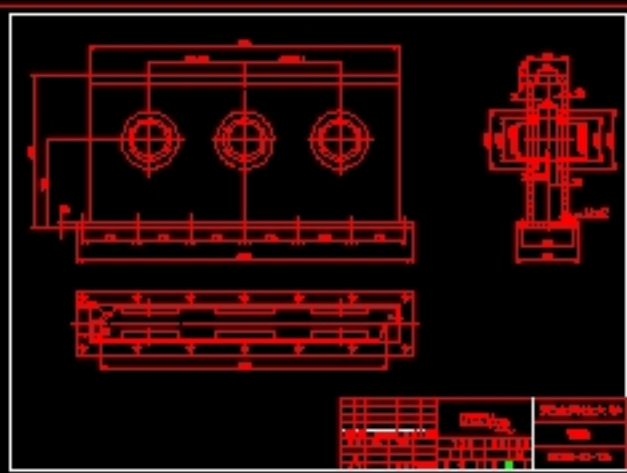
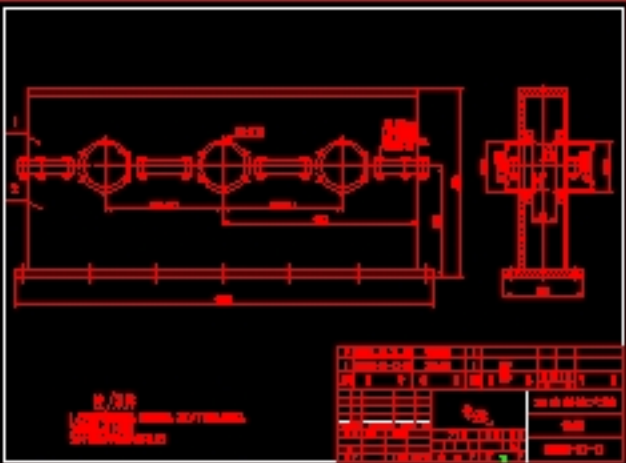


技/条件  
1.223螺  
2.3?螺0.79















45# 4件		天津科技大学
零件名称: 主套I		图号:
比例: 1:1		日期: 2007.5
图例:		第 12 页 共 12 页
日期: 2007.5		第 12 页 共 12 页

图纸2



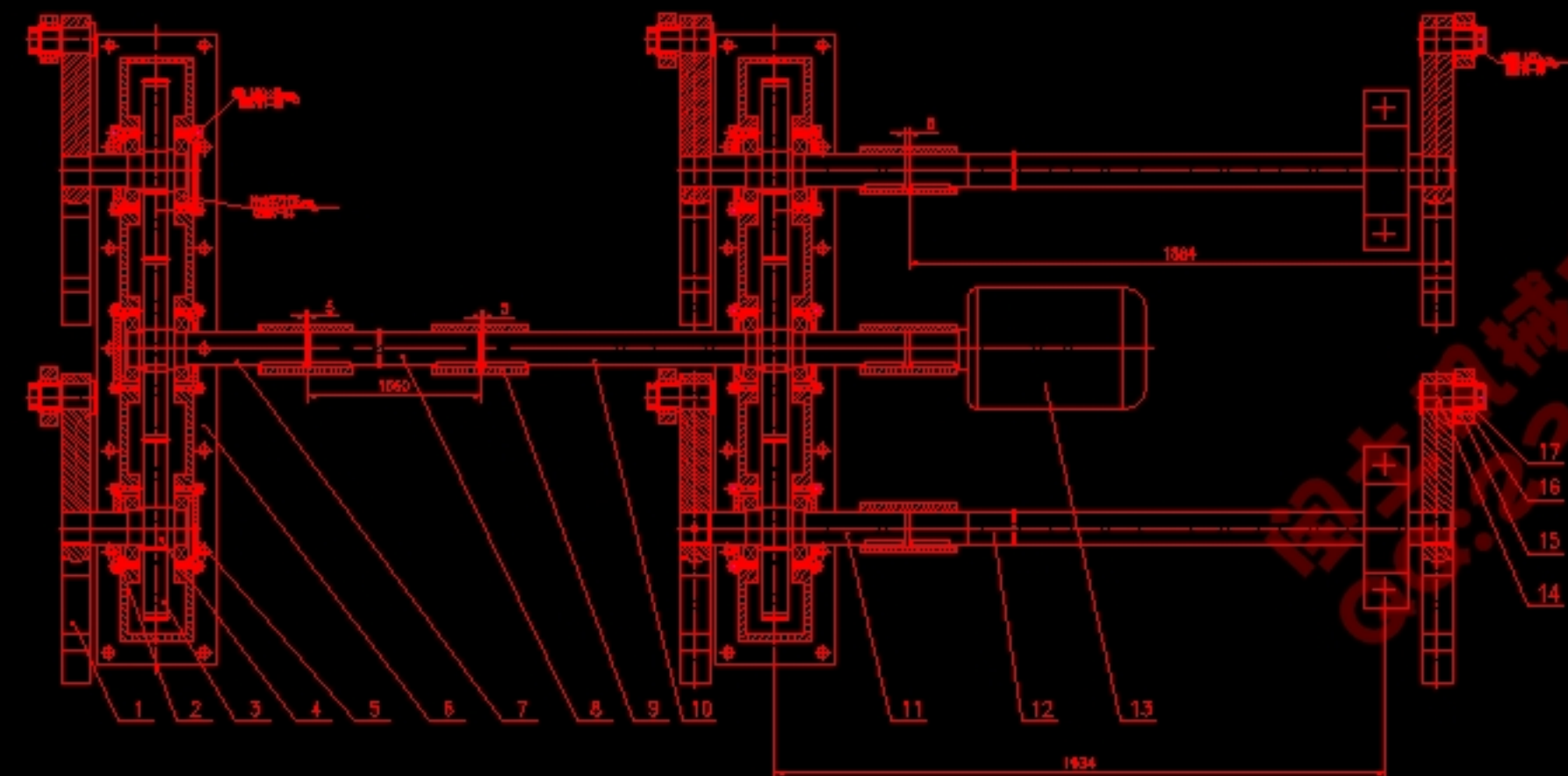
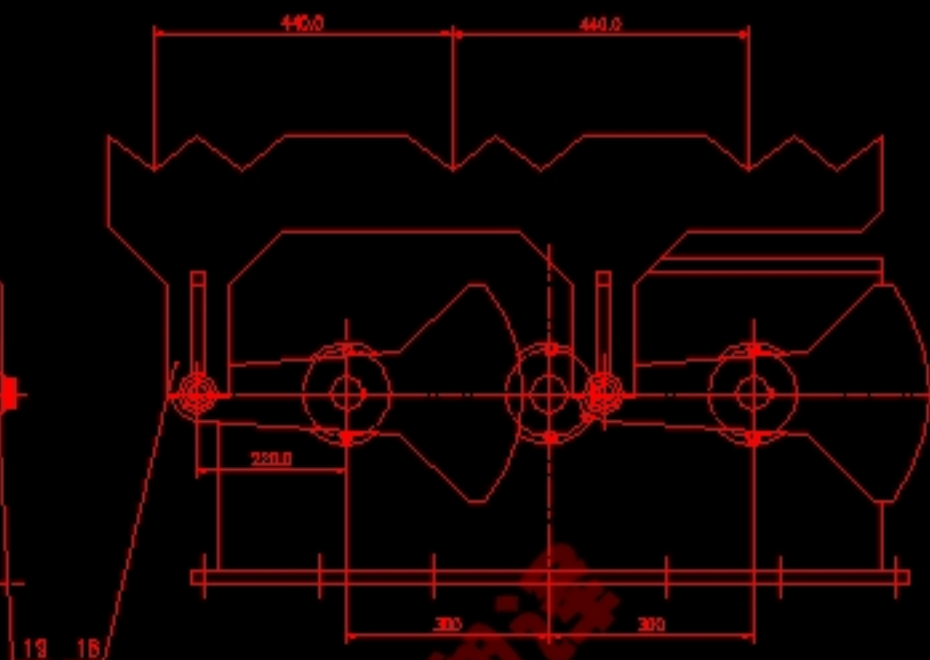
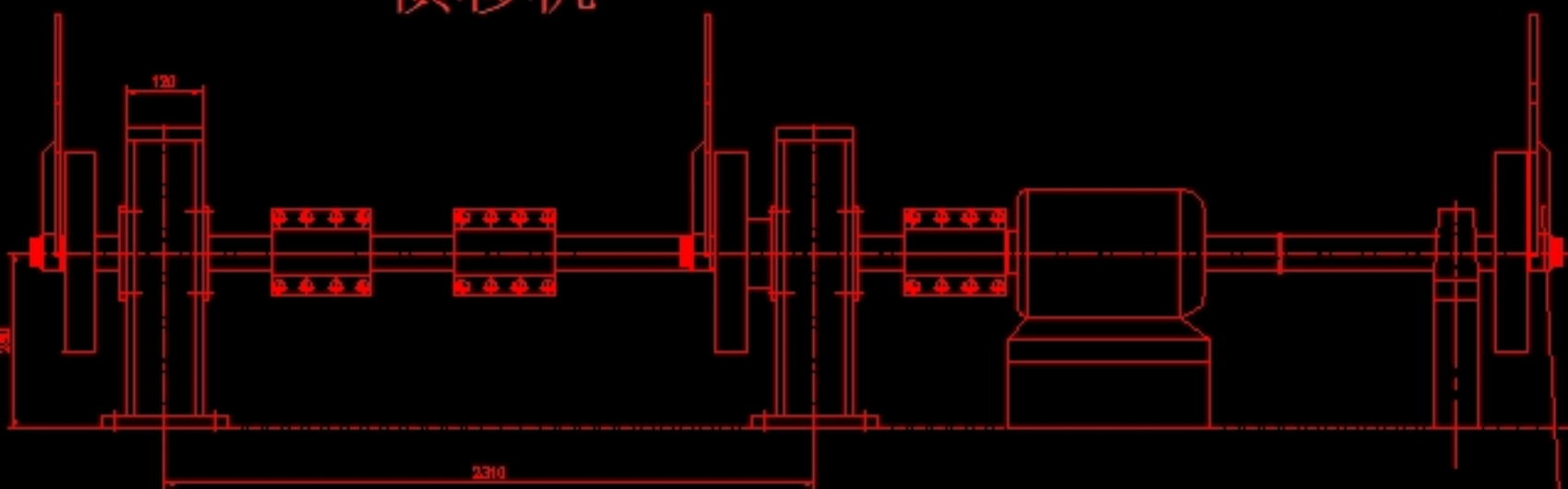


图纸4

 11.doc	2013/10/5 14:01	Microsoft Word ...	21 KB
 22.doc	2013/10/5 18:01	Microsoft Word ...	21 KB
 2007-1.dwg	2013/10/5 18:01	AutoCAD 图形	1,741 KB
 2007-2.dwg	2013/10/5 9:01	AutoCAD 图形	987 KB
 2007-3.dwg	2013/10/5 17:01	AutoCAD 图形	967 KB
 2007-4.dwg	2013/10/5 19:01	AutoCAD 图形	974 KB
 SDX05-02-00A.dwg	2013/10/5 16:01	AutoCAD 图形	367 KB
 参考文献.doc	2013/10/5 19:01	Microsoft Word ...	28 KB
 钢管热浸镀锌自动.ppt	2013/10/5 16:01	Microsoft Power...	233 KB
 买家售后必读.jpg	2017/8/16 7:41	图片文件(.jpg)	439 KB
 目录.doc	2013/10/5 14:01	Microsoft Word ...	23 KB
 目录英文.doc	2013/10/5 19:01	Microsoft Word ...	29 KB
 说明书正文.doc	2013/10/5 11:01	Microsoft Word ...	475 KB
 专业开题报告.doc	2013/10/5 17:01	Microsoft Word ...	56 KB

文件夹所含资料

# 横移机



19	50005-02-17	轴衬套	6	Q235A		
18	50005-02-16	轴	3	Q235A		
17	50005-02-02	平	6	Q235A		
16	50005-02-11	轴套	6	Z05n0-6-3		
15	50005-02-13	轴套	6	45#		
14	50005-02-19	轴衬套	6	Q235A		
13		5轴	1			
12	50005-02-03	轴	2	45#		
11	50005-02-05	轴	2	45#		
10	50005-02-09	轴套	1	45#		
9	50005-02-18	轴套	5	Q235A		
8	50005-02-08	轴套	1	45#		
7	50005-02-07	轴套	1	45#		
6	50005-02-12	轴衬套	2	Q235A		
5	50005-02-04B	轴	3	Q235A		
4	50005-02-06	轴套	2	45#		
3	50005-02-14	轴	6	45#		
2	50005-02-04A	轴	3	Q235A		
1	50005-02-01	轴套	6	Q235A		